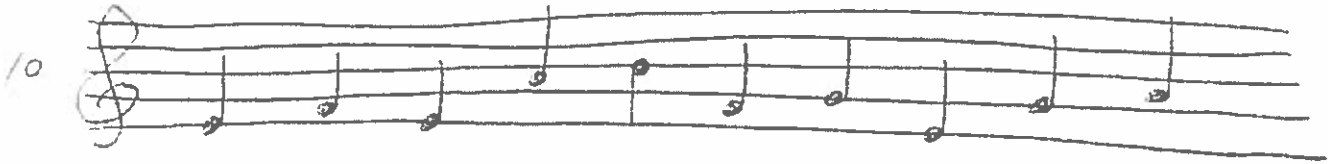
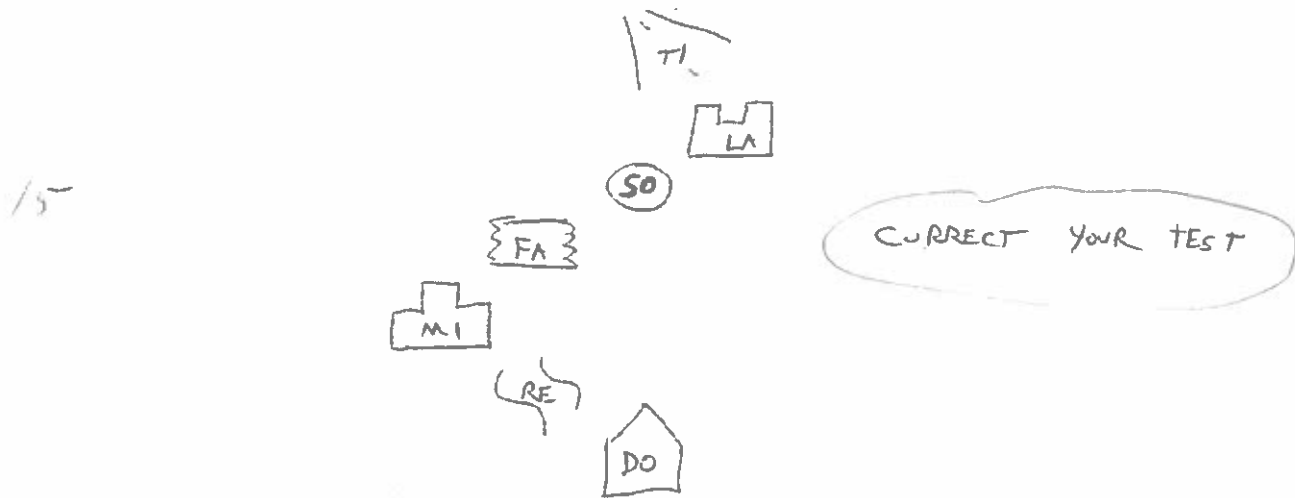


2. Name the notes using the letters E, F, G, A or B



3. Name the places in Solfege Town using Do, Re, Mi, Fa, So, La and Ti



4. Pick a meter:  $\frac{4}{4}$   $\frac{3}{4}$   $\frac{2}{4}$  or  $\frac{6}{8}$  Write it here \_\_\_\_\_

5 What does it count to? \_\_\_\_\_

The top number tells you what it counts to.  $\frac{4}{4}$   $\frac{3}{4}$   $\frac{2}{4}$   $\frac{6}{8}$

5. Write out the 12-bar Blues using Do, Fa and So

10

All different	DO	FA Do Do	All the same
	FA	FA Do Do	
	SO	FA Do Do	

CORRECT YOUR TEST